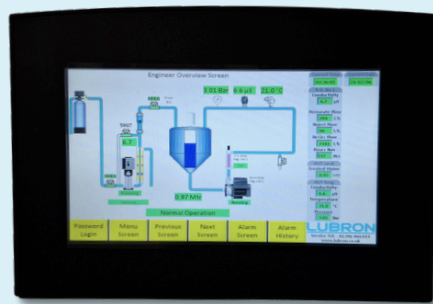


# ENDOSCOPY OSMOTHERM MICRO

Compact, high-performance reverse osmosis system designed for medical and healthcare environments. Engineered to deliver consistently pure water, it integrates advanced RO technology, UV sterilisation, and 0.2-micron ultra-filtration.



## WHY CHOOSE OSMOTHERM MICRO

- 💧 **Single-cabinet unit** perfect for installations with limited space.
- 💧 **Automated membrane rinse cycles** preserve membrane life and ensure long-term performance.
- 💧 **High-capacity 316-grade stainless steel storage tank** with thermal insulation for superior hygiene and durability.
- 💧 **Integrated monitoring, detailed logging, and intuitive HMI interface** for user-friendly operation.
- 💧 **Built-in UV system** provides ongoing bacterial control.
- 💧 **Hygienic 316-grade stainless steel butterfly valves and tri-clamp fittings** ensure safe, reliable operation.
- 💧 **User-friendly hygienic sampling valves** make water quality checks quick and simple.
- 💧 **Includes pressure sensors, dry-run protection, and automatic dump valves** for maximum system security.

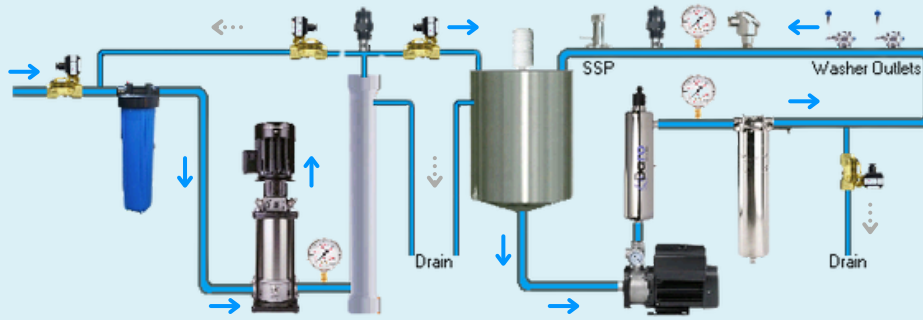
Discover the benefits of our **5 for 5 Warranty and Servicing Package**

[Click here to learn more](#)

8 Challenge Way, Hythe Hill Colchester, Essex. CO1 2LY

[WWW.LUBRON.CO.UK](http://WWW.LUBRON.CO.UK)

## SYSTEM FLOW DIAGRAM



## TECHNICAL SPECIFICATION

WATER QUALITY HTM 01-06 COMPLIANT		FEED WATER SPECIFICATION	
Conductivity	<40 $\mu\text{S}/\text{cm}$	General	Potable water
Bacteria (TVC)	<10 cfu/100mL	Total conductivity	<750 $\mu\text{S}/\text{cm}$
Mycobacteria	Non-detected / 100mL	Hardness	<400 mg/L
Particles	<0.2 microns	Free Chlorine	<0.4 mg/L
TOC	< 1 mg/L	Temperature	5 - 25°C
		Pressure	2-6 bar

## PRODUCT SPECIFICATION

PRODUCT SPECIFICATION	90/100	180/100	250/100	400/100
Capacity at 15°C (L/h)	90	180	250	400
Drain from RO (mm)	12			
Recover ratio	Up to 70%			
Ring main flow (L/min)	Up to 60			
Dimensions (W x D x H mm)	642 x 802 x 1985			
Shipping weight (approx.)	180 kg			
Inlet connection	3/4" BSP			
Ring main connections	1" Tri-Clamp			
Power Supply	1ph, 240V, 32A			

Disclaimer: This brochure reflects the latest technical standards at the time of publication but may change without notice. No rights can be claimed from this content. Please contact Lubron for expert advice before making a purchase. (4-2025)